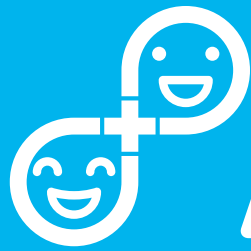


Aichi Medical Interpretation System



AIMIS

アイミス



On-site
interpretation
service
is available



Telephonic
interpretation
service
is available



Translation
of medical referrals
and others
is available



Yakusu-kun

It is
a relief.

It is
helpful.

Interpretation services are available at participating hospitals

Available languages

English, Chinese, Portuguese, Spanish, Filipino

*Telephone interpretation
is also available in Korean

Please check the reverse for more information

Please use this system when
having problems communicating
at participating hospitals.



Interpreter dispatch service

A medical interpreter with
a set level of knowledge and skill
can be dispatched at the request
of a medical institution.
(Requires appointment)

Aichi Medical Interpretation System

This service helps foreign residents of the prefecture
to receive proper treatment through
the assistance of a dispatched
interpreter or telephonic
interpretation.

Telephonic interpretation

We can provide support
for first visits, emergencies
and at night.

Operating 24 hours, 365 days

Translation of medical referrals and others

Translation of medical referrals
to other medical institutions
and others is available.

Contents of the service

It will be determined
by the medical institutions
as necessary

Notice

- Interpreters are dispatched at the request of a medical institution.
(We do not accept the request directly from the patient)
- There are medical institutions where the service is not available. Please check with
the operation office or visit our website.
- As a general rule, half of the interpretation fees will be charged to the patient and
half to the medical institution.
In case of interpreter dispatch, the fee (for the patient) ranges from 1,500 to 2,500 yen for two hours,
depending on the level of specialization necessary for the interpretation.

For inquiries
regarding the service

Aichi Medical Interpretation System Operation Office
TEL.050-5814-7263 Weekdays 9:00am to 5:30pm

aichi-iryoku-tsuuyaku-system

Search

<http://www.aichi-iryoku-tsuuyaku-system.com>

Aichi Medical Interpretation
System Promotion Association

Established by Aichi Medical Association, Aichi Hospital Association, Aichi Dental Association,
The Aichi pharmaceutical Association, Aichi Nursing Association, Aichi Prefectural university,
Aichi University, Nagoya University of Foreign Studies, Nagoya Gakuin University,
Aichi Prefectural Government, and every municipality in the prefecture in February, 2012